



Authorized US representative for Phoenix-Fly products

MORPHEUS TECHNOLOGIES

5107 Lantana Street, Zephyrhills, FL 33542, USA
(813) 780-8961, (813) 788-7072 fax

www.baserigs.com, info@baserigs.com

Order Form – Pants & Jacket

TRACKING SUIT

Customer Data

Name _____
 Address _____

 Country _____
 Tel/Fax _____
 Email _____
 PFI instructor name _____
 PFI number _____

Measurements in:

- cm
 inch

OFFICE USE ONLY	
Date Received:	_____
Amount Paid:	_____
Notes:	_____

PRICE	
PF PANTS	\$ 309,00
PF JACKET	\$ 299,00
PF PANTS AND PF JACKET	\$ 549,00

MEASUREMENTS

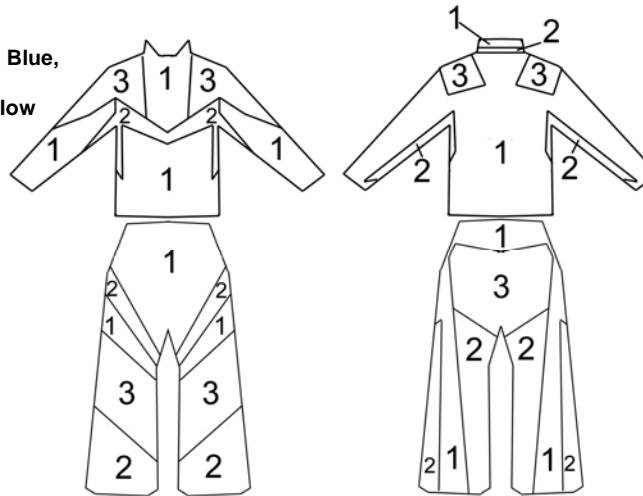
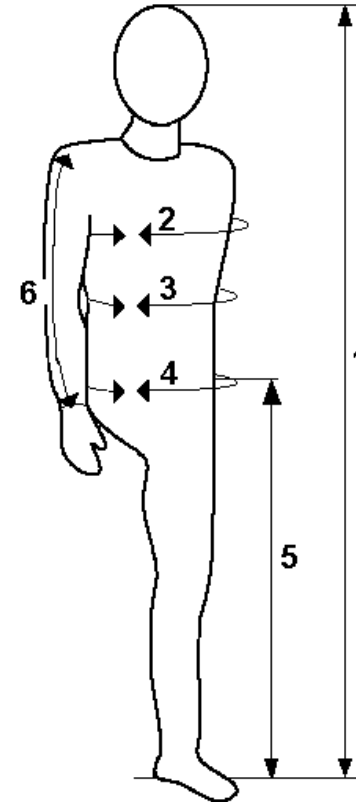
Please take your measurements carefully. We are unable to make your wing suit fit you without your correct measurements. Study the diagram to assist you. Get someone to help you, and double check each measurement. Measure yourself over a T/shirt and thin trousers. Do not add anything to your measurements. If we receive incorrect measurements, we will have to charge for modifications. Take all these measurements around the widest part, except the waist.

PHOENIX FLY PANTS

- HEIGHT _____
Without shoes
- WAIST _____
Narrowest Part
- HIP _____
Widest Part (around buttocks)
- LEG _____
From hipbone to ankle
- WEIGHT _____

PHOENIX FLY JACKET

- HEIGHT _____
Without shoes
- CHEST _____
Widest Part
- ARM _____
From the shoulderbone to the bone of the wrist
- WEIGHT _____



COLORS

Z/P available colors: **White, Black, Red, Orange, Yellow, Royal Blue, Purple, Gray, Teal and Navy**
 Parapack available colors: **Black, Red, Royal Blue, Orange, Yellow**

PANTS P1. Z/P PANTS: _____
 P2. Z/P PANTS: _____
 P3. PARAPACK: _____

JACKET J1. Z/P JACKET: _____
 J2. Z/P JACKET: _____
 J3. PARAPACK: _____

CHOOSE HOW TO PAY:

Credit Card Type: MC VISA Discovery
 (Please note: Credit Card Surcharge - 3% Domestic, 4% International)

Exp. Date: _____

Credit Card Number: _____

3 Digit CID Code: _____

DELIVERY TIME: Approximately 4-6 weeks from the time we receive your completed order form and your 50% deposit.